





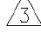
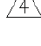

**STOCKADE 200-2939
5.0HP SUBARU 15LT
TWIN TANK COMPRESSOR
C100665**



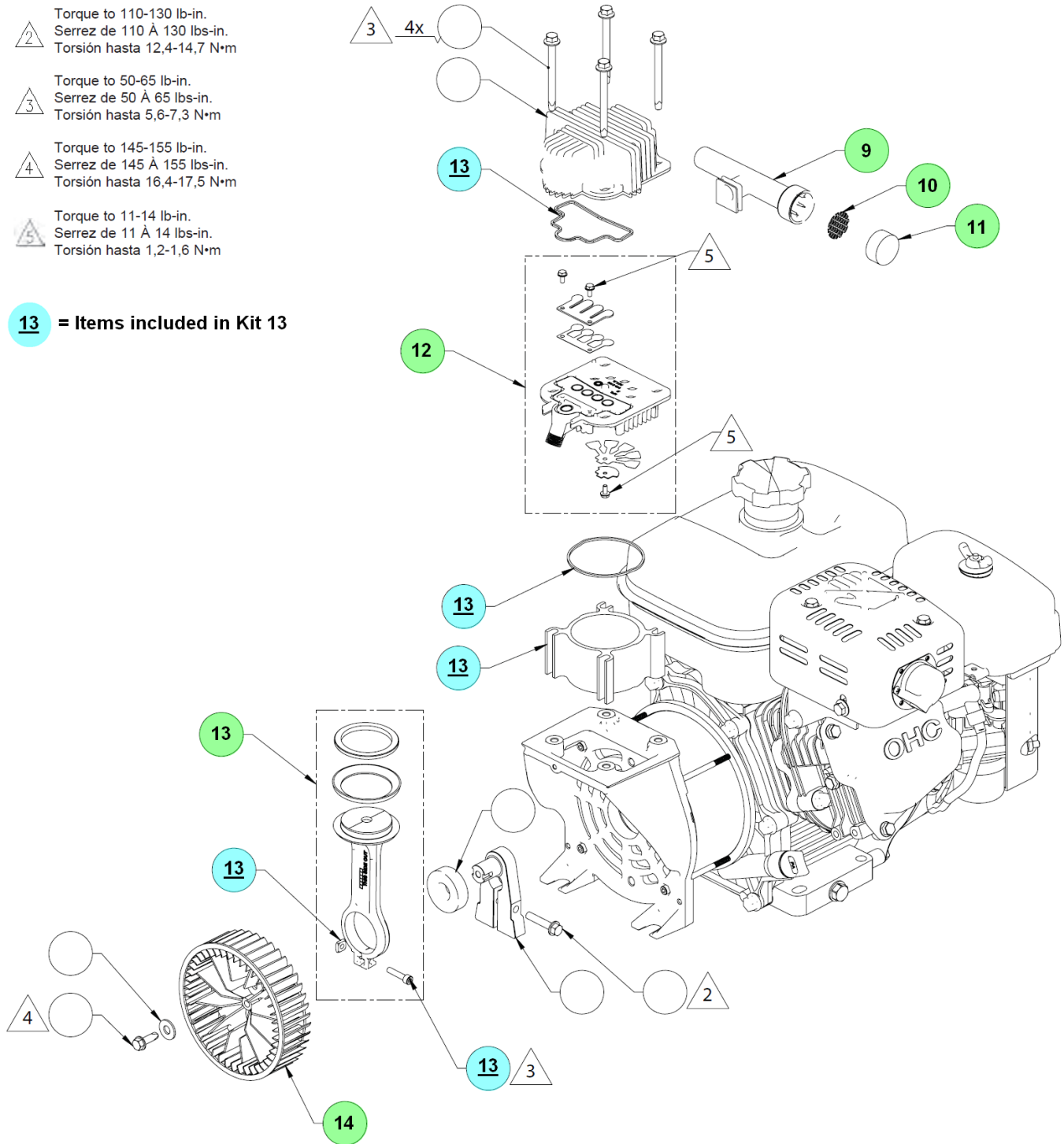
ILLUSTRATED PARTS LIST

Stockade 200-2939 5.0HP Subaru 15Lt Twin Tank Compressor C10066

NOTES:

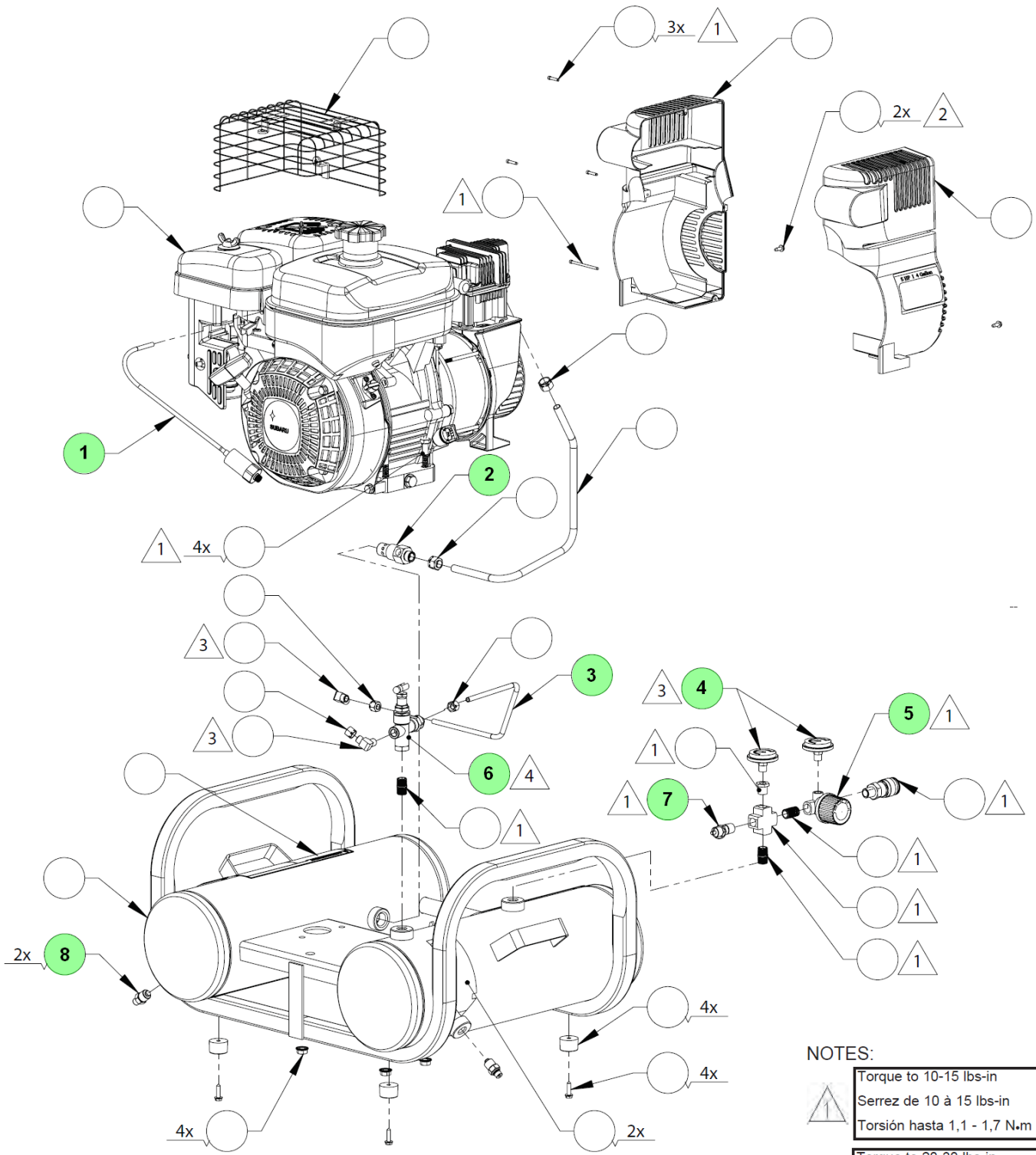
-  Torque to 60-75 lb-in.
 Serrez de 60 À 75 lbs-in.
 Torsión hasta 6,8-8,5 N·m
-  Torque to 110-130 lb-in.
 Serrez de 110 À 130 lbs-in.
 Torsión hasta 12,4-14,7 N·m
-  Torque to 50-65 lb-in.
 Serrez de 50 À 65 lbs-in.
 Torsión hasta 5,6-7,3 N·m
-  Torque to 145-155 lb-in.
 Serrez de 145 À 155 lbs-in.
 Torsión hasta 16,4-17,5 N·m
-  Torque to 11-14 lb-in.
 Serrez de 11 À 14 lbs-in.
 Torsión hasta 1,2-1,6 N·m

13 = Items included in Kit 13



All parts sold as single items unless described as a set etc., or forms part of an assembly (multiple items defined within a box). A part with no item number is only available in an assembly.

**Stockade 200-2939
5.0HP Subaru 15Lt
Twin Tank Compressor
C10066**



Note: Tighten compression nuts #9 & #20 handtight plus 1 full turn.
Note: Serrez l'écrou #9 & #20 de compactage solide plus 1 plein tour.
Nota: Apriete la tuerca #9 & #20 de la compresión handtight más 1 vuelta completa.

- NOTES:**
- 1 Torque to 10-15 lbs-in
Serrez de 10 à 15 lbs-in
Torsión hasta 1,1 - 1,7 N.m
 - 2 Torque to 20-30 lbs-in
Serrez de 20 à 30 lbs-in
Torsión hasta 2,3 - 3,4 N.m
 - 3 Torque to 50-75 lbs-in
Serrez de 50 à 75 lbs-in
Torsión hasta 5,7 - 8,5 N.m
 - 4 Torque to 50-75 lbs-in
Serrez de 50 à 75 lbs-in
Torsión hasta 5,7 - 8,5 N.m

All parts sold as single items unless described as a set etc., or forms part of an assembly (multiple items defined within a box). A part with no item number is only available in an assembly.

PARTS LEGEND**STOCKADE 200-2939 COMPRESSOR****C10066**

1	090-0038	1	VALVE, THROTTLE CONTROL	8	072-0006	2	VALVE, DRAIN
2	031-0037	1	VALVE, CHECK	9	019-0192	1	FILTER/INTAKE MUFFLER
3	S145-0338	1	TUBE, BLEEDER	10	019-0199	1	FILTER SCREEN
4	032-0056	2	GAUGE, PRESSURE	11	019-0186	1	FILTER, AIR INLET (FOAM)
5	019-0167	1	REGULATOR	12	043-0171	1	VALVE PLATE ASSY KIT
6	070-0061	1	VALVE, UNLOADER	13	048-0105	1	PISTON & CYLINDER KIT
7	136-0073	1	VALVE, PRESSURE RELIEF	14	027-0033	1	FAN, PLASTIC SQUIRREL CAGE



**WARNING: All parts must be periodically inspected and replaced if worn or damaged.
Failure to comply can affect the tool's operation and present a safety hazard.**