



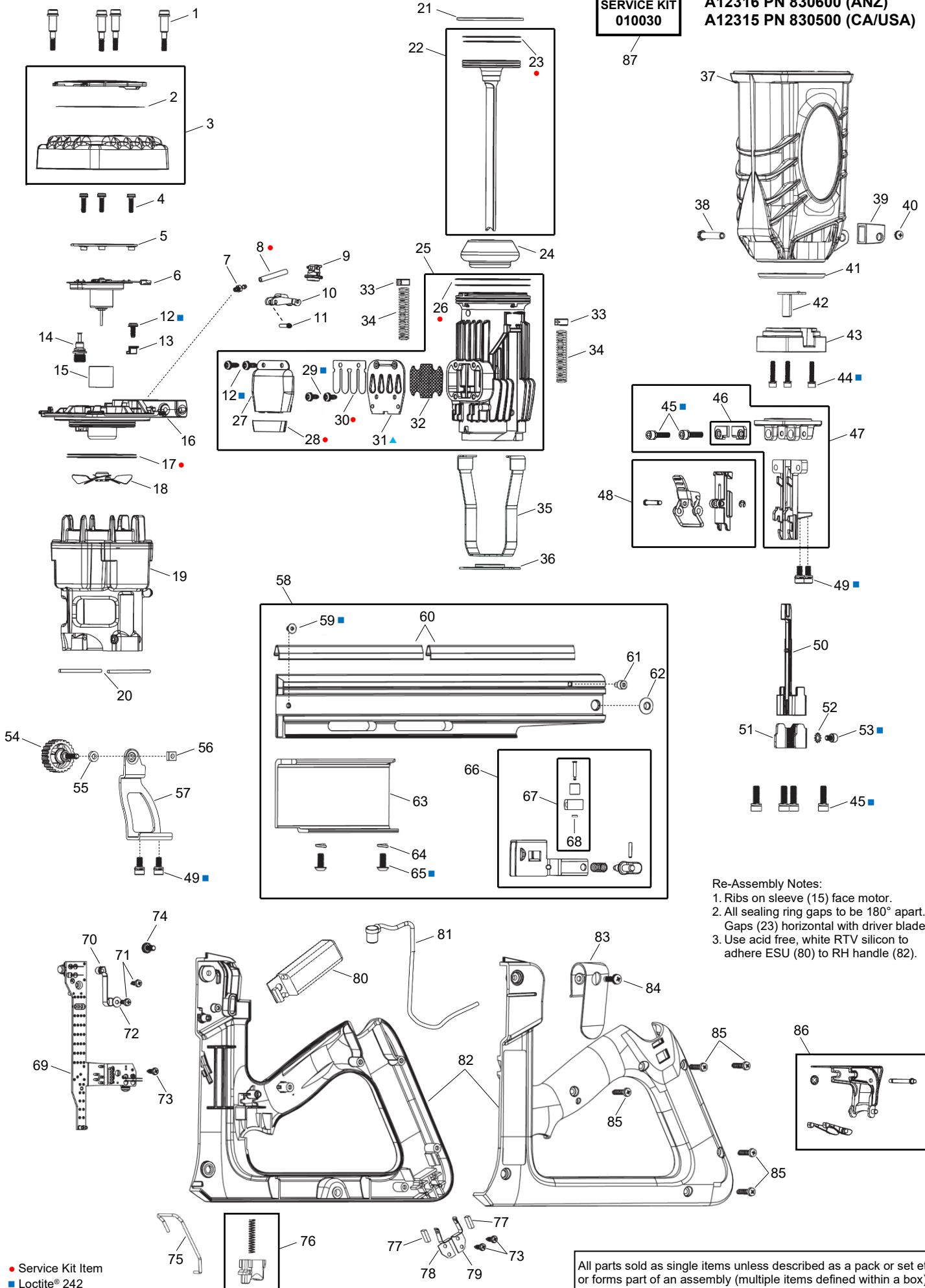
**STOCKADE ST315i
FENCE BATTEN STAPLER
A12316 / 830600 (ANZ)
A12315 / 830500 (CA/USA)**



ILLUSTRATED PARTS LIST



Stockade ST315i
A12316 PN 830600 (ANZ)
A12315 PN 830500 (CA/USA)



Re-Assembly Notes:
 1. Ribs on sleeve (15) face motor.
 2. All sealing ring gaps to be 180° apart.
 Gaps (23) horizontal with driver blade.
 3. Use acid free, white RTV silicon to adhere ESU (80) to RH handle (82).

● Service Kit Item
 ■ Loctite® 242
 ▲ Permatex® Blue 81724

All parts sold as single items unless described as a pack or set etc, or forms part of an assembly (multiple items defined within a box). ie. A part with no item number is only available in an assembly.

PARTS LEGEND

STOCKADE ST315i FENCE BATTEN STAPLER

A12316/A12315

1	901063	4	Screw SHC 10-24 x 1-1/2	45	905574	6	Screw SHC SEMS M6x20 (RPLS 905575)
*	900315	1	Filter	46	905582	1	Guide Plate Set (RH/LH)
→	905560	1	Cap & Grill Assembly	47	905578	1	Nose & Flange Assembly
4	900902	3	Screw TF SEMS 8-32 x 5/8	48	905548	1	Nose Plate & Latch Assembly
5	901422	1	Circuit Board, Fan	■	905572	4	Screw SHC SEMS M5x12 → (RPLS 900572, 905573 x 4)
6	901430	1	Motor Assembly, Fan	50	905567	1	Probe
7	904517	1	Barb, Fuel	→	905586	1	Probe Adaptor
* ●	904546	1	Tube, Fuel (RPLS 902215) →	52	905585	1	Washer, Star
9	902231	1	Block, Fuel	53	905584	1	Screw SHC M5x8
*	902211	1	Pivot Arm, Fuel	54	801124	1	Knob Assembly
11	902213	1	Pin, Fuel Arm Pivot	55	905552	1	Washer, Nylon
■	900596	3	Screw TX SEMS 8-32 x 7/16 →	56	100180	1	Nut, Square
13	404453	1	Bracket, Ignition Lead	57	905550	1	Bracket (Magazine to Handle)
14	900286	1	Spark Plug Assembly	58	905579	1	Magazine Assembly
15	401356	1	Sleeve, Fan Motor	■	905595	1	Screw FH (Negator Spring)
16	902221	1	Cylinder Head	*	905590	2	Channel, Staple Guide/Wear
* ●	900935	2	Ring, Sealing (Cylinder Head)	■	905594	1	Screw SHC
18	403167	1	Fan Blade Assembly	62	905593	1	Bush, Follower Lock Out
19	902551	1	Combustion Chamber Assembly	63	905591	1	Plate, Cover
20	404827	2	Pin	64	905573	2	Washer, Split
21	401328	1	Circlip	■	905592	2	Screw UHC M5x12
*	905563	1	Driver & Piston Assembly	→	905580	1	Follower Assembly (RPLS 38506102A)
* ●	401461	2	Ring, Sealing (Piston)	67	905581	1	Spring Assembly, Negator
*	404419	1	Bumper	68	905597	1	Ring, PU Retaining
25	100178A	1	Sleeve Assembly	→	90059A	1	Circuit Board Assembly
* ●	900934	2	Ring, Sealing (Sleeve)	70	219429	1	Roller & Lever Assembly
27	404423	1	Cover, Muffler	71	100268	2	Screw PHC PH TF 6-19 x 5/16
* ●	404422	1	Muffler	72	100269	1	Washer, Flat #6
■	900595	2	Screw TX SEMS 8-32 x 3/8	73	404702	3	Screw PHC PH TF 6-32 x 3/8
* ●	404424	1	Reed Valve	74	100169	1	Screw PHC PH 10-32 x 3/8
▲	404425	1	Plate, Reed	75	100097	1	Lockout Bar
32	404426	1	Baffle, Exhaust	→	404435A	1	Trigger & Spring Kit (RPLS 404435, 904043)
33	404464	2	Stop, Rubber	77	404922	2	Pad, Battery
34	100265	2	Spring, Yoke	78	100096	1	Battery Contact (Left/Pos)
35	100070	1	Yoke	79	100095	1	Battery Contact (Right/Neg)
36	100262	1	Plate, Support	80	900474	1	Electronic Spark Unit (ESU)
37	905562	1	Body Housing Assembly	81	100157	1	Wire Assembly, Ignition Lead
38	100060	1	Bush, Threaded	→	905564	1	Handle Assembly (RH/LH)
39	905551	1	Spacer Block (Fuel Cell Seat)	83	401495	1	Hook, Belt
40	100273	1	Screw PH SEMS 10-32 x 3/8	84	401407	1	Screw PHC PH 6-32 x 9/16
41	100158G2	1	Ring, Shroud	85	901066	5	Screw PHC T20 TF 8-16 x 3/4
42	905546	1	Actuator, Probe	→	902295	1	Fuel Door Assy
43	905544	1	Flange, Adaptor	→	010030	AR	Service Kit
■	900296	3	Screw SEMS 10-24 x 1				

* Normal Wear Items

** Ensure Warning Label is affixed and legible

● Included in Service Kit

■ Apply Loctite® 242 (Blue)

▲ Permatex® Ultra-Blue Gasket Sealant 81724

→ New Change

AR As Required

ACCESSORIES

201	905557	Battery Nc	206	900477	Transformer (CA/USA)
202	902665	Car Charger Adaptor 12VDC	207	B20544F	Impulse Oil (ANZ Only)
203	905542K	Charger Kit, Single (ANZ)	208	B20544L	Degreaser (ANZ Only)
204	B20544C	Transformer (ANZ)	209	401331	4mm Hex Key
205	906015K	Charger Kit, Single (CA/USA)			

Remove battery, fuel & staples before commencing service.



Use eye and ear protection when operating/testing tools.

Use eye protection when cleaning tools.

Use degreaser in a well ventilated area.



All parts must be periodically inspected and replaced if worn or damaged.

Failure to comply can affect the tool's operation and present a safety hazard.

ACCESSORIES - ST315i FBS Nc

905557		Battery	902665		Car Charger Adaptor 12VDC
905542K		Charger Kit (ANZ)	B20543C		Transformer (ANZ)
906015K		Charger Kit (North America)	900477		Transformer (North America)
B20544F		Impulse Lubricating Oil (ANZ Only)	B20544L		Degreaser (ANZ Only)
401331		5/32" Hex Key			

Change Notes

Revisions 1-4

Item	Part No.	Items/Description	Change	Action/Change Description
*98	902296	Fuel Door Assembly (Orange)	Design	Replaced by 902295 (Colour changed to black) (R2)
*99	010021	Service Kit	Availability	Introduced Kit (R3) (Superceded R5)
Acc	B20444C	Transformer (ANZ)	Correction	Corrected typo to read B20544C (R1)
	905542	Single Charger Base (ANZ)	Availability	Discontinued (R2) Reverted to Dual Charger Base 905555
	905555	Dual Charger Kit (CA/USA)		Introduced Kits (Base & Transformer). No PN change for CA/USA (R4). (Superceded R5)
	905555ANZ	Dual Charger Kit (ANZ)		

*Item numbering per previous revision

Revision 5

Item	Part No.	Items/Description	Change	Action/Change Description
*1	905574	Screw SHC SEMS M6x20	Correction	Qty corrected to 6 ea (45)
*3	905575	Split Washer	Design	Obsolete due Screw (45) now SEMS
*7	905587	Latch, Nose	Availability	Discontinued. POA ¹ 905548 (48), Nose Plate & Latch Assembly
*9	905588	E-ring		
*10	905589	Step pin		
*17	905573	Split Washer		Qty reduced by 4 due Screw (49) now SEMS
*22	905596	Shaft		Discontinued. POA 905581 (66), Negator Spring Assembly
50	905586	Probe Adaptor	Enhancement	Increased adjustment slot length
66	38506102A	Follower Assembly	Availability	Introduction of Follower Assembly
	905580		Format	Converted to Paslode PN standard
*24	905598	Spring	Availability	Discontinued. POA 905580 (66), Follower Assembly
*25	905599	Roll Pin		
*43	500596	Screw TX SEMS 8-32 x 7/16	Correction	Corrected typo to read PN 900596 (12)
3	905560	Cap & Grill Assembly	Availability	Introduction of Cap & Grill Assembly
*51	902206	Cap		Discontinued. POA 905560 (3), Cap & Grill Assembly
*53	903209	Grill		
*63	902210	Fuel Dosing Lever		
*66	902209	Fuel Door		Discontinued. POA 902295 (86), Fuel Door Assembly
*67	902230	Fuel Door Pin		
*68	902235	Fuel Door Retaining Ring		
69	100059A	Circuit Board Assy	Enhancement	Supply wiring relocated to enter the circuit board at 0° in-lieu of 90°. Prevents possible fuel cell interference. Rolling change, PN not affected.
*71	902215	Fuel Tube		Replaced by 904546 with greater wall thickness (8)
76	404435A	Trigger & Spring Kit	Availability	Introduction of Kit
*91	904043	Trigger Spring		Discontinued. PIK ² 76, Trigger & Spring Kit 404435A
*92	404435	Trigger		
82	905564	Handle Assembly	Enhancement	Length of boss for Roller & Lever Assembly (70) on RH handle decreased by 0.5 mm to reduce lateral movement of lever. Rolling change, PN not affected.
*97	900572	Screw SHC M5x12	Correction	Corrected typo to read 905572 (49)
*99	010021	Service Kit	Availability	Replaced by Stockade branded 010030 (87)
49	905572	Screw SHC SEMS M5x12	Design	Changed to SEMS configuration (fixed split washer). Rolling change, part number not affected.
Acc	905555	Dual Charger Kit (CA/USA)	Availability	Replaced by 906015K due US(CA) EPA rules
	905555ANZ	Dual Charger Kit (ANZ)		Replaced by 905542K due US(CA) EPA rules
	A12910	Battery	Format	Replaced by 905557
N/A	Various	Layout/flag notes	Schematic	Complete layout re-design & re-numbering for clarity. Defined available assemblies. Added Service Kit & Kit items and added flag notes. Added re-assembly notes. Adopted conventional naming. Updated Loctite® & usage and added flag notes.
		Parts/Notes	Parts Legend	Removed parts no longer available separately. Updated PN changes. Added Service Kit & Loctite® flag notes

¹ POA - Purchase on Assembly

² PIK - Purchase in Kit

*Item numbering per previous revision