



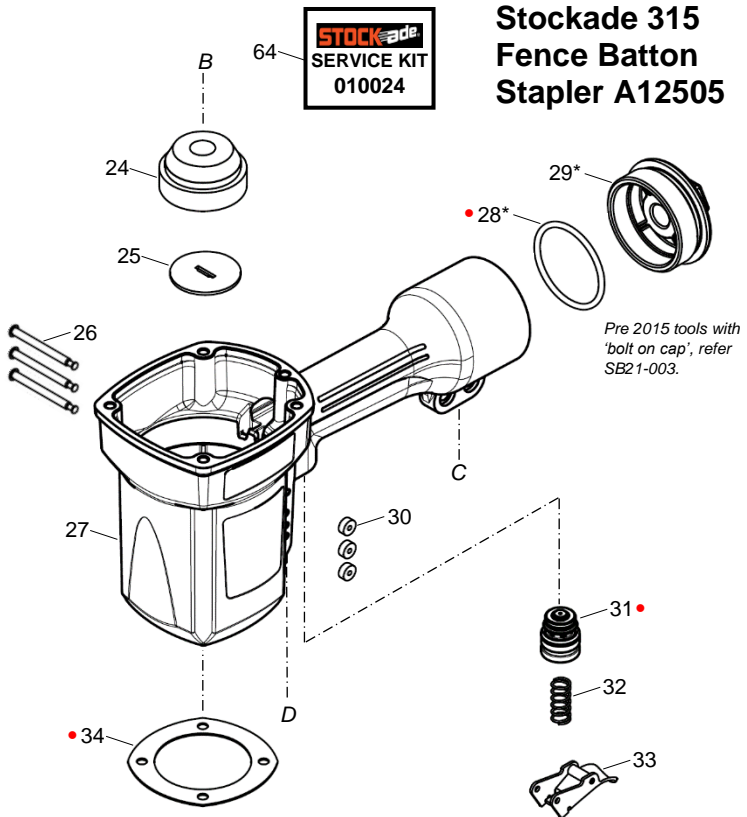
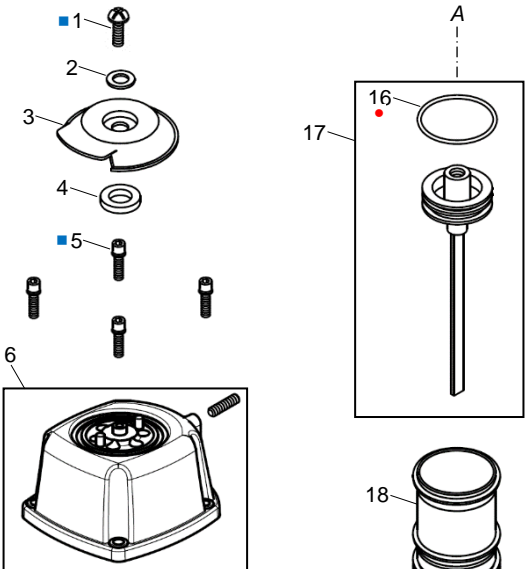
**STOCKADE ST315
FENCE BATTEN
STAPLER
A12505**



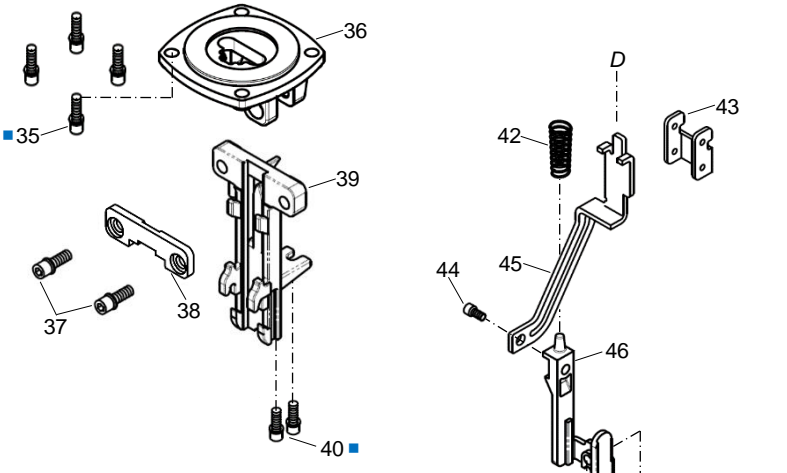
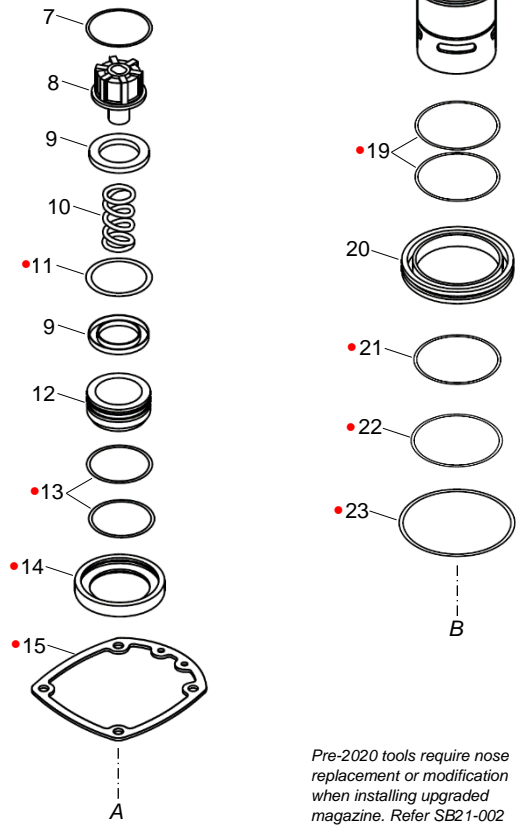
ILLUSTRATED PARTS LIST



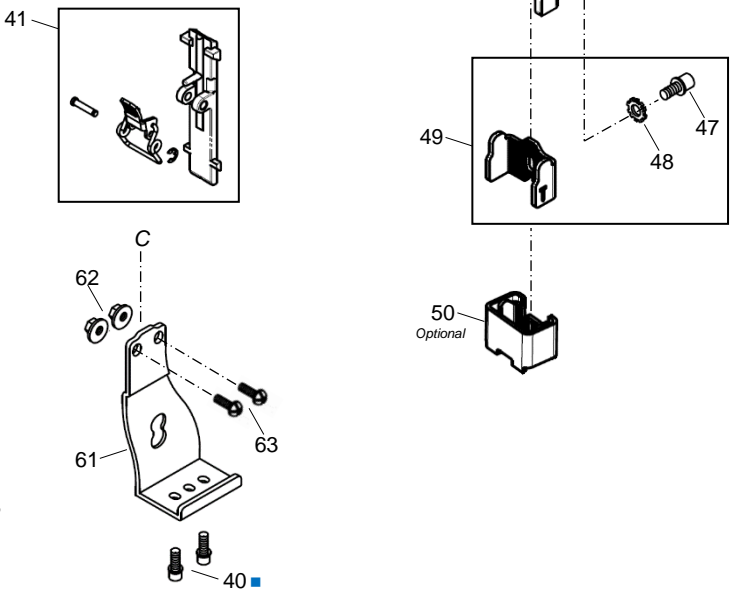
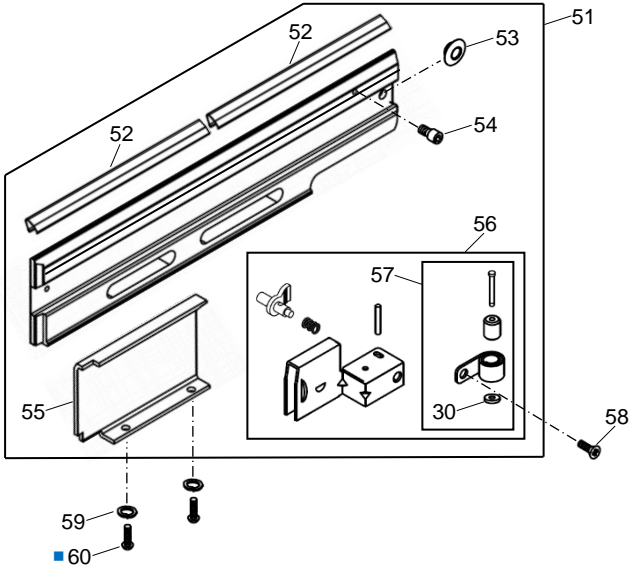
Stockade 315 Fence Batton Stapler A12505



Pre 2015 tools with 'bolt on cap', refer SB21-003.



Pre-2020 tools require nose replacement or modification when installing upgraded magazine. Refer SB21-002



Optional

- Service Kit Item
- Loctite® 242

All parts sold as single items unless described as a pack or set etc, or forms part of an assembly (multiple items defined within a box). ie. A part with no item number is only available in an assembly.

PARTS LEGEND

STOCKADE 315 FENCE BATTEN STAPLER

A12505

■ 1	US05080L-20	1	Screw UH (RPLS 1 x US06100B-20) →	→ 36	38506601	1	Flange, Nose (RPLS 25202901)
→ 2	FW050130B-10	1	Washer, Flat (RPLS FW060130B-10)	■ 37	905574	2	Screw SHC 6x20 (RPLS HS06100B-20) →
3	15100202-A30	1	Cover, Exhaust	38	38505401	1	Plate, Support
→ 4	15300401	1	Ring PU (RPLS 15108501)	→ 39	38505204	1	Nose (RPLS 38505201, 38505202, 38505203)
■ 5	HS06100LW-25	4	Screw SHC SEMS	■ 40	900572	4	Screw SHC SEMS 5x12 → (RPLS HS05080LW-12)
→ 6	15108803-A33	1	Cap Assembly (RPLS 15100601-A33, 15100801-A33, 15108802-A33)	→ 41	38508101A	1	Nose Plate & Latch Assy (RPLS 15304801, 25205001A, 38505101, ER0300R)
7	15100801	1	Spacer	42	38503301	1	Spring
8	15100901	1	Stopper, Piston	43	25203201	1	Guide, Lever
9	15100401	2	Spacer	■ 44	HS05080BW-08	1	Screw SHC SEMS
10	15101001	1	Spring	45	25209101	1	Lever
*● 11	OR41630N	1	O-Ring	46	38503401	1	Probe
12	15101202	1	Piston, Main Valve	→ 47	905584	1	Screw SHC 5x8 (RPLS HS05080L-08)
*● 13	OR52126N	2	O-Ring	→ 48	905585	1	Washer, Star (RPLS 25209401)
*● 14	15101401	1	Seal, Cylinder	→ 49	905586	1	Probe Adaptor, Notched (Standard) (RPLS 38506301, 38506301A)
*● 15	15109101	1	Gasket (RPLS 15102401) →	50	38506201A	1	Probe Adaptor, Toothed Block (OP)
*● 16	OR45735N1	1	O-Ring, Piston (RPLS OR45735N) →	→ 51	905579	1	Magazine Assy (RPLS 38505502/3/4 38505503-B01, 25205701/A, HS04070B-06)
* 17	38501601A	1	Driver & Piston Assembly	→ 52	905590	1	Channel, Staple Guide
18	25202101	1	Cylinder	→ 53	905593	1	Bush, Follower Lock Out (RPLS 25205701)
*● 19	OR53726N	2	O-Ring	→ 54	905594	1	Screw SHC (RPLS HS04070B-06, HS04070L-06)
20	15301801	2	Bulkhead	→ 55	905591	1	Cover (RPLS 25905801)
*● 21	OR47735N	1	O-Ring, Bulkhead Back-up	→ 56	38506102A	1	Follower Assembly (RPLS 38506101, 15306403, 12103901, RP3018S)
*● 22	OR54431N	1	O-Ring, Return Pressure	→ 57	905581	1	Spring Kit, Negator
*● 23	OR74431N	1	O-Ring Bulkhead	→ 58	905595	1	Screw FH (RPLS FH04070L-05)
* 24	25202202	1	Bumper	→ 59	905573	2	Washer, Split M5 (RPLS SW0500W)
25	38502301	1	Seal, Driver	→ 60	905592	2	Screw USHC 5x12 (RPLS US05080L-12)
26	16102902	3	Pin, Step	61	15306802	1	Bracket
→ 27	15108901-A32	1	Body Housing (RPLS 15102501-A32)	62	LN0600NB	2	Nut, Lock
*● 28	OR44431N	1	O-Ring (RPLS 15107001) →	63	US06100B-20	2	Bolt USHC
→ 29	35307101-A32	1	Housing, Air Inlet (RPLS 15107101-A33)	→ 64	010024	1	Service Kit
*● 30	905597	4	Ring PU (RPLS 16103001) →				
*● 31	15104405A	1	Trigger Valve Assy (RPLS 15104401A) →				
32	16305401	1	Spring				
33	25205301A	1	Trigger, Sequential				
*● 34	15108402	1	Gasket (RPLS 15108401) →				
■ 35	HS06100BW-20	4	Screw SHC SEMS				

- * Normal Wear Items
- Included in Service Kit
- Apply Loctite® 242 (Blue)
- New Change
- AR As Required
- OP Optional



Use eye protection when cleaning tools.
Use eye and ear protection when operating/testing tools.
Use degreaser in a well ventilated area

Use only approved Paslode Compressor Tool Oil PN F27625.
Never use mineral based oils.
Oil tool daily with 4 to 6 drops via air inlet connection.
Heavy usage will require more frequent oiling.

Operating air pressure at the tool inlet: 550-760 kpa (80-110 psi).
Never exceed the maximum stated air pressure.
Regularly check the regulator and pressure gauge operation.

A water/oil trap must be installed on the regulator outlet and drained regularly.

Never use bottled air or gases such as oxygen to operate the tool.

Accessories supplied in carry case*

- 1 x 38506201A Probe Adaptor
- 1 x 30ml Oil
- 1 x 3mm Hex Key
- 1 x 4mm Hex Key
- 1 x 5mm Hex Key
- 1 x Safety Glasses

*Carry case non-procurable



WARNING: All parts must be periodically inspected and replaced if worn or damaged.
Failure to comply can affect the tool's operation and present a safety hazard.

Change Notes

Revision 1 (2013)

Item	Part No.	Item Description	Change	Action/Change Description
*3	US05080L-20	Screw UH	Design	New - Replaces 1 x US06100B-20 (1)
*4	15108501	Ring PU		Replaced by 15300401 (3)
*5	HS06100BW-25	Screw SEMS		Replaced by HS06100LW-25 (5)
*34	25203401	Probe	Enhancement	Replaced by 38503401 (46)
*36	OR14018N	O-Ring	Availability	POA ¹ , Item 31 15104401A Trigger Valve Assembly (Superceded R3)
*37A	15103701A	Valve Assembly		
*38	OR17515N	O-Ring		
*39	OR05819N	O-Ring		
*40	OR06020N	O-Ring		
*41	15104101	Valve Plunger		
*42	15104201	Plunger		
*43	OR02515V	O-Ring		
*44	15104401	Plunger Cap		
*46	OR08819N	O-Ring		
*47	OR19824N	O-Ring		
*83	15108301	Spring		
*52	38505201	Nose	Manufacturing	Replaced by 38505202 (Superceded R2)
*55	38505501	Magazine	Design	Replaced by 38505502 (Superceded R2)
*67	FH04070B-04	Bolt FH		Replaced by FH04070L-05 (Superceded R5)
*77	FW060130B-10	Flat Washer		Replaced by FW050130B-10 (2)
*84	15108401	Gasket	Manufacturing	Replaced by 15108402 (34)
*92B	38506201A	Probe Adaptor	Enhancement	Introduction of Toothed Block Probe Adaptor
*97	25310001	Sleeve (Cap)	Manufacturing	Obsolete

*Item numbering per previous revision

(00) Item numbering as of R5

¹ Purchase on Assembly

Revision 2 (2014)

Item	Part No.	Item Description	Change	Action/Change Description
*52	38505202	Nose	Manufacturing	Replaced by 38505203 (Superceded R3)
*55	38505502	Magazine	Design	Replaced by 38505503 (Superceded R3)
*92C	38506301	Notched Probe Adaptor	Enhancement	Introduction of Probe Adaptor (Superceded R5)

Revision 3 (2015)

Item	Part No.	Item Description	Change	Action/Change Description
*25	15102501-A32	Body Housing	Design	Obsolete by items 27, 28 & 29 (15108901-A32, OR44431N & 35307101-A32). Refer SB21-003
*70	15107001	Gasket		
*71	15107101-A32	Air Inlet Housing		
*75	HS05080BW-16	Bolt (x3)		

Revision 4 (2020)

Item	Part No.	Item Description	Change	Action/Change Description	
*6	15100601-A33	Cap Assembly	Manufacturing	Replaced by 15100801-A33 (Superceded)	
	15100801-A33			Replaced by 15108801-A33 (Superceded)	
	15108801-A33			Replaced by 15108802-A33 (Superceded R5)	
*15	OR45735N	O-Ring		Replaced by OR45735N1 (16)	
*24	15102401	Gasket		Replaced by 15109101 (15)	
*44	15104401A	Trigger Valve Assy		Replaced by 15104405A (31)	
*52	38505203	Nose		Replaced by 38505204 (39)	
*55	38505503	Magazine		Design	Replaced by 38505504 (Non-procurable R5)
*66	RP3016S	Roll Pin			Replaced by RP3018S (Non-procurable R5)
*80	HS04070B-06	Screw SHC	Replaced by HS04070L-06 (Superceded R5)		

*Item numbering per previous revision

(00) Item numbering as of R5

¹ Purchase on Assembly

Revision 5 (2021)

Item	Part No.	Item Description	Change	Action/Change Description	
*6	15108802-A33	Cap Assembly	Manufacturing	Replaced by 15108803-A33 (6)	
*26	16103001	Ring PU	Format	Replaced by 905597 (30)	
*29	25202901	Nose Flange	Design	Replaced by 38506601 (36)	
41	38508101A	Nose Plate & Latch Assy	Availability	Introduction of Assembly	
*48	15304801	Step Pin	Availability	POA ¹ 41, Nose Plate Assembly 38508101A	
*50A	25205001A	Latch			
*51	38505101	Nose Plate			
*56	ER0300R	E-ring			
51	905579	Magazine Assembly			Introduction of Assembly
*55	38505502	Magazine	Manufacturing	Replaced by 38505503 (Superceded)	
	38505503			Replaced by 38505503-B01 (Superceded)	
	38505503-B01		Design	Replaced by 38505504 (Superceded)	
	38505504			POA 51, Magazine Assembly 905579	
*57	25205701	Bush, Follower Lock Out	Format	Replaced by 905593 (53)	
*58	25905801	Cover		Replaced by 905591 (55)	
*59-1	SW0500W	Split Washer		Replaced by 905573 (59)	
*60	HS05080LW-12	Screw SHC SEMS		Replaced by 905572 (40)	
56	38506102A	Follower Assembly	Availability	Introduction of Assembly	
*61	38506101	Follower		POA 56, Follower Assembly 38506102A	
*64	15306403	Stopper			
*65	12103901	Spring			
*66	RP3018S	Roll Pin			
57	905581	Spring Kit, Negator			Introduction of Kit
*62	15306201	Spring, Negator			POA 57, Negator Spring Assembly 905581
*63	12105802	Step Pin			
*86	15308601	Drum			
*67	FH04070L-05	Screw FSHC	Format	Replaced by 905595 (58)	
*72	12106404	Air Inlet Adaptor	Availability	Non-procurable	
*80	HS04070L-06	Screw SHC	Format	Replaced by 905594 (54)	
*81	US05080L-12	Screw UH 5x12		Replaced by 905592 (60)	
*82	SS06100B-06	Set Screw	Availability	POA 6, Cap Assembly 15108803-A33	
*92A	25209201	Flat Probe Adaptor		Obsolete	
*92C	38506301	Notched Probe Adaptor	Manufacturing	Replaced by 38506301A (Superceded)	
	38506301A		Format	Replaced by 905586	
	905586		Design	Modified 2020. Slot elongated to decrease depth of drive. Rolling change.	
*94	HS06100B-20	Screw SHC 6x20	Format	Replaced by 905574 (37)	
*95	25209401	Star Washer		Replaced by 905585 (48)	
*96	HS05080L-08	Screw SHC 5x8		Replaced by 905584 (47)	
*97	905590	Staple Guide Channel	Design	Introduction channel (adopted from 315i tool)	
N/A	Various	Assemblies/Flag Notes	Schematic & Parts Legend	Complete re-format Introduced assemblies Adopted conventional naming Added Service Kit & Kit item flags Updated & added Loctite® flags	

*Item numbering per previous revision

(00) Item numbering as of R5

¹ Purchase on Assembly